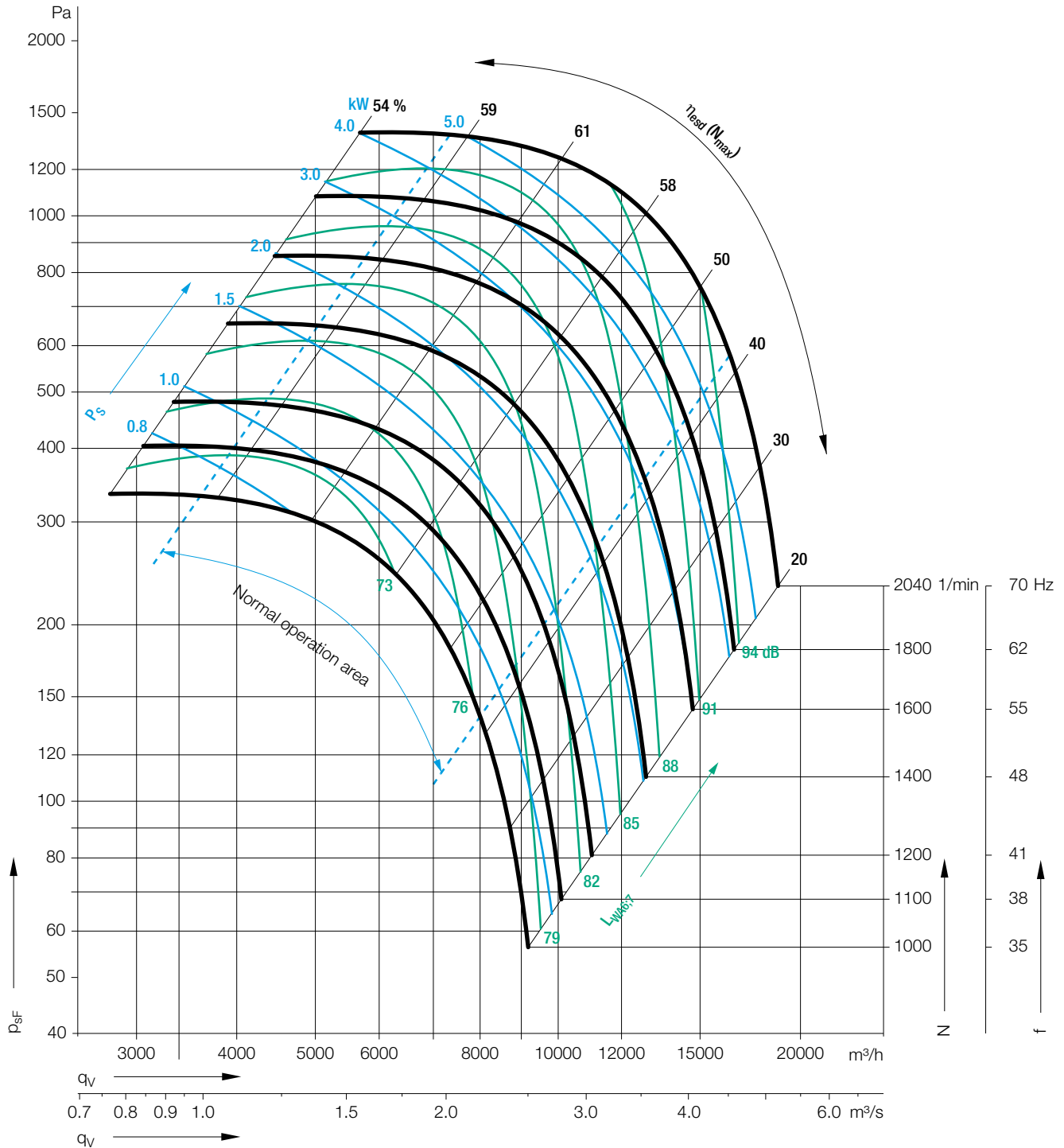


**Technical Data**

Density of media **1.15 kg/m<sup>3</sup>**.  
 Tolerance class **2** according to **DIN 24166**.  
 Measured in installation **A** according to **ISO 5901** (unducted).



**Determination of the Octave level**

**Inlet side**

Relative sound power level  $L_{Wrel17}$  at octave band correction factors  $f_c$ .

Duty point	63	125	250	500	1000	2000	4000	8000 Hz
$\leq 1.4 q_{Vopt}$	-2	1	2	0	-7	-12	-16	-22 dB
$> 1.4 q_{Vopt}$	-4	-2	1	0	-7	-10	-16	-24 dB

**Discharge side**

Relative sound power level  $L_{Wrel16}$  at octave band correction factors  $f_c$ .

Duty point	63	125	250	500	1000	2000	4000	8000 Hz
$\leq 1.4 q_{Vopt}$	-3	-5	-3	-1	-6	-16	-19	-27 dB
$> 1.4 q_{Vopt}$	-9	-8	-3	-1	-5	-14	-19	-29 dB